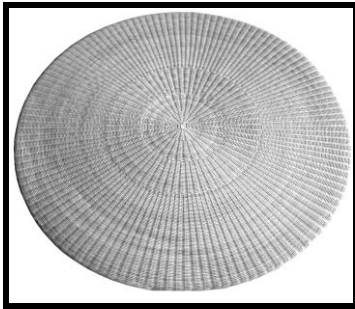


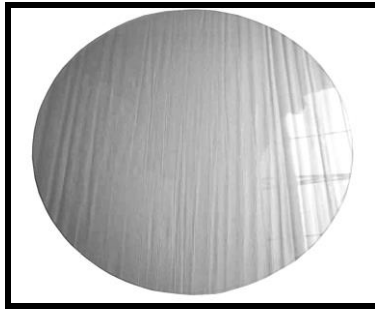
# KINGSLEY-BATE

Fine Garden Furniture

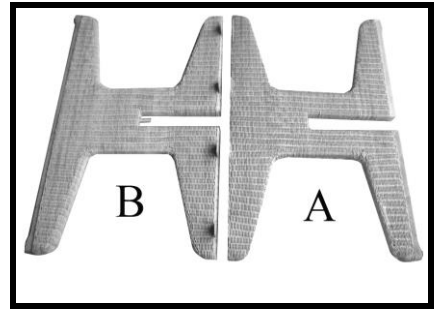
## ASSEMBLY INSTRUCTIONS FOR THE WR-50/60



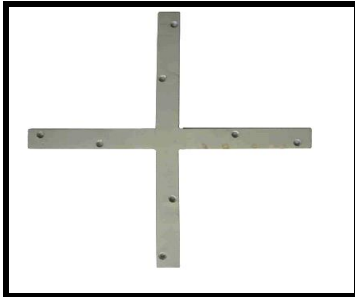
**TABLE TOP**



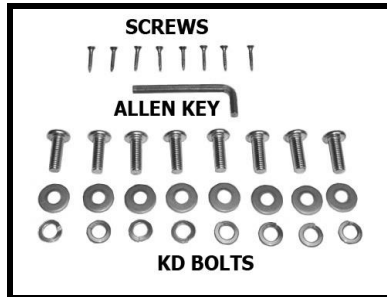
**GLASS TOP**



**LEGS ASSEMBLY**

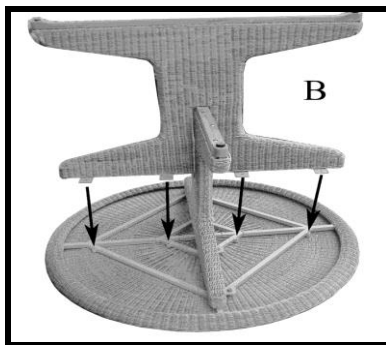
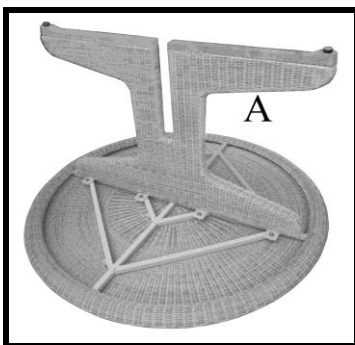


**CROSS BRACKET**



### STEP-I

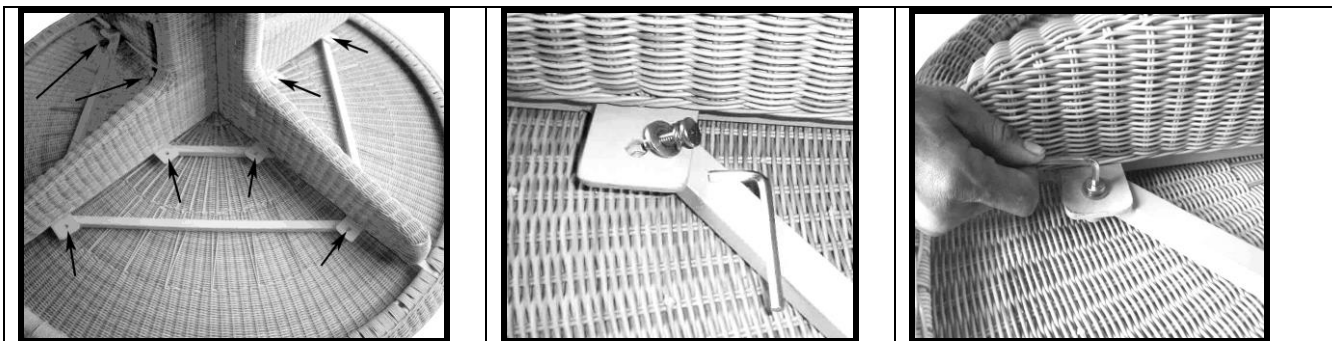
Unpack, inspect and lay the parts on a clean, flat, soft surface to avoid marring the wicker.



### STEP-II

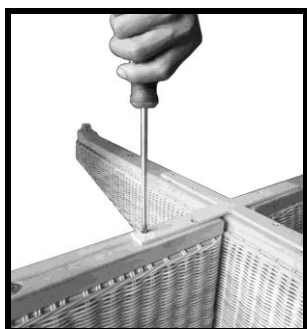
Place the TABLE TOP upside down on a soft surface and attach LEG ASSEMBLY “A” loosely to TABLE TOP. Slide LEG ASSEMBLY “B” over and onto “A” making sure to line up LEG ASSEMBLY

BRACKETS with TABLE TOP assembly holes.



### **STEP-III**

Slide the flat washers followed by the split washers onto the KD (knock-down) BOLTS and secure all KD BOLTS as shown in photographs with the allen key provided.



### **STEP-IV**

Line up CROSS BRACKET to bottom of base and using a proper, hand held screw driver, insert and secure all screws.

**IF YOU HAVE ANY QUESTIONS REGARDING THE ASSEMBLY OF YOUR KINGSLEY-BATE FURNITURE, PLEASE CONTACT THE KINGSLEY-BATE DEALER NEAREST TO YOUR OR KINGSLEY-BATE DIRECTLY. WE THANK YOU FOR CHOOSING OUR FURNITURE.**

***\* KINGSLEY-BATE WILL NOT TAKE RESPONSIBILITY FOR DAMAGE  
IF THESE INSTRUCTIONS ARE NOT FOLLOWED PROPERLY***

7200 Gateway Court, Manassas, Virginia 20109  
Phone: 703-361-7000, Fax: 703-361-7001