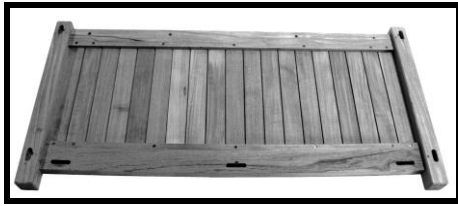


# KINGSLEY BATE

Fine Garden Furniture

## ASSEMBLY INSTRUCTIONS FOR THE CB-53/60



**BACK PANEL**



**BOTTOM**



**FRONT PANEL**



**LEFT & RIGHT SIDE PANELS**



**HANDLES**



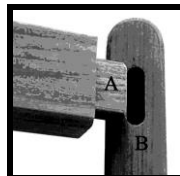
**LID**



**HYDRUALICS**



**KD BOLTS**



**\* NOTE:**  
**A TENON**  
**B MORTISE HOLE**

### STEP-I

Unpack, inspect and lay the parts on a clean, flat, soft surface to avoid marring the wood.

**NOTE:** During assembly of the furniture please match all joints with the corresponding letters or numbers stamped on the furniture.



### STEP-II

Carefully place the **BACK PANEL** on a smooth, flat surface with the mortise holes facing up. Matching the stamped numbers on the tenons with those next to the mortise holes, gently insert the **LEFT** and **RIGHT SIDE PANELS** and the **BOTTOM** into position as shown in the photograph.



### STEP-III

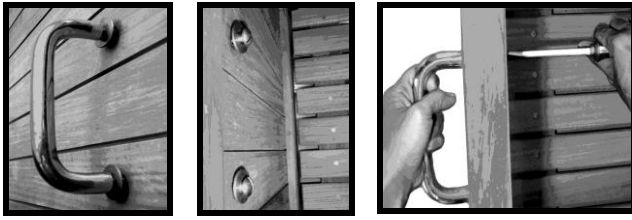
Fit the **FRONT PANEL** over and onto the exposed tenons and using a rubber mallet, drive all joints together evenly. If you use a hammer, put the sanding block between the hammer head and the wood to prevent any damage or marring of the wood.



### STEP-IV

Drive locking dowels into place with a hammer. Use the sanding block between the hammer head and the dowel to prevent marring of the wood. If dowel protrudes above the wood, sand it level with sanding block provided. Make sure to sand along grain of the wood. **DO NOT FORCE**

**DOWELS.**



#### **STEP-V**

From inside the box, insert 2 brass bolts fitted with one washer each. Slide 2 additional washers over the exposed threads on the outside of the box and using a proper screw driver,

secure the handle into place; repeat on other side of box. Use of power screw driver could cause damage to the hardware or wood.



#### **STEP-VI**

Mount the lid with the 6mm brass knock down bolts. Insert and slightly tighten all bolts by hand before tightening with a proper screw driver. NOTE: THIS WILL BE EASIER TO DO WITH 2 PEOPLE. YOU DO NOT WANT TO LET THE WEIGHT OF THE

LID FALL BACKWARDS DURING ASSEMBLY.



#### **STEP-VII**

Gently pop hydraulics into place as shown in photographs. Please note that the black cylinder of the hydraulic attaches to the box and the steel shaft attaches to the lid.

NOTE: Before installation wipe any excess fluid from the hydraulic casing to prevent staining of the teak. Periodic inspection and wiping of your hydraulics will help prevent sediment from entering the casing and damaging the product. When fully open the lid will stay in the open position. To close, gently push forward and allow the lid to drop freely; DO NOT FORCE LID DOWN AS YOU CAN DAMAGE THE ITEM.



IF YOU HAVE ANY QUESTIONS REGARDING THE ASSEMBLY OF YOUR KINGSLEY BATE FURNITURE, PLEASE CONTACT KINGSLEY BATE CUSTOMER SERVICE AT 703-361-7000. WE THANK YOU FOR CHOOSING OUR FURNITURE.

*\* KINGSLEY BATE WILL NOT TAKE RESPONSIBILITY FOR DAMAGE  
IF THESE INSTRUCTIONS ARE NOT FOLLOWED PROPERLY\**

7200 Gateway Court, Manassas, Virginia 20109  
Phone: 703-361-7000, Fax: 703-361-7001