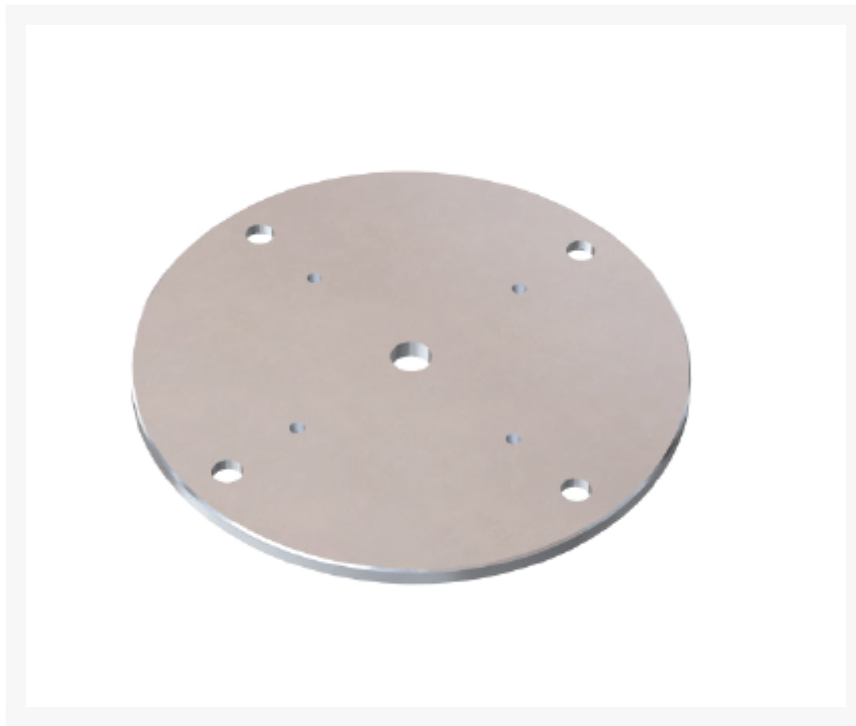


ShadowSpec Unity™ and Serenity™ Umbrella Surface Plate

SPC-UM110312-2



This ShadowSpec Unity™ and Serenity™ Surface Plate is crafted from 316 stainless steel components. They are the perfect solution for mounting to existing concrete patio or decking. Enjoy the convenience of having your items securely attached, without sacrificing style or durability.

- Materials: 316 stainless steel components
- For deck, patio and concrete mounting
- Allows 360° umbrella rotation
- 7/10" bolt holes
- 1/2" plate thickness
- Dimensions: 14" diameter x 2"H; 22 lbs